



www.nutrition2014.org

III WORLD CONGRESS OF PUBLIC HEALTH NUTRITION
II LATIN AMERICAN CONGRESS OF COMMUNITY NUTRITION
X CONGRESO DE LA SOCIEDAD ESPAÑOLA
DE NUTRICIÓN COMUNITARIA (SENC)

PUBLIC HEALTH NUTRITION: THE CORE OF INTERNATIONAL COOPERATION FOR DEVELOPMENT

Sunday November 9, 2014 · From 15:00 to 17:30 · Language: English · Price: €50 (Limited capacity)

PRE-CONGRESS WORKSHOP

COMMUNITY-BASED INTERVENTIONS FOR CARDIOVASCULAR HEALTH PROMOTION AMONG SCHOLARS

Jose Luis Peñalvo
Tufts University / CNIC

Helmut Schroeder
Institut Hospital del Mar d'Investigacions Mèdiques, IMIM

Benjamin Caballero
Johns Hopkins University

Roos Verstraeten
Ghent University

[Online Registration](#)

✓ Introduction

The workshop will be carried out through a series of case-examples covering all scholar phases from early childhood to adolescence. For each case-examples, the strengths and limitations for the intervention development, and implementation will be discussed and a special focus will be placed in both process and impact evaluation of the intervention. A moderated discussion with the audience will take place at the end of the session where different key points will be discussed.

✓ Programme

15:30 · 15:40 **Opening**
Jose L. Peñalvo
Tufts University / CNIC

15:40 · 16:00 **Keynote**
Benjamin Caballero
Johns Hopkins University



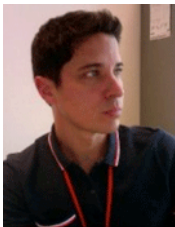
www.nutrition2014.org

III WORLD CONGRESS OF PUBLIC HEALTH NUTRITION
II LATIN AMERICAN CONGRESS OF COMMUNITY NUTRITION
X CONGRESO DE LA SOCIEDAD ESPAÑOLA
DE NUTRICIÓN COMUNITARIA (SENC)

PUBLIC HEALTH NUTRITION: THE CORE OF INTERNATIONAL COOPERATION FOR DEVELOPMENT

- 16:00 · 16:15 **The Program SI! intervention for enhancing a healthy lifestyle in preschoolers: Results from a cluster randomized trial.**
Jose L. Peñalvo
Tufts University / CNIC
- 16:15 · 16:30 **The THAO-Child Health Program: Preliminary results from the POIBC study**
Helmut Schroeder
Institut Hospital del Mar d'Investigacions Mèdiques, IMIM
- 16:30 · 16:45 **A school-based health promotion intervention in Ecuadorian adolescents: a cluster randomized-controlled trial**
Roos Verstraeten
Ghent University
- 16:45 · 17:30 **Moderated debate with the audience**

✓ BIO



Dr. Jose Luis Peñalvo
Tufts University / CNIC

Dr. Peñalvo has been a postdoctoral fellow at the University of Helsinki School of Medicine (Finland) and the Johns Hopkins School of Public Health (Baltimore, MD) before joining the Spanish National Center for Cardiovascular Research (CNIC) in 2008. While at CNIC, José has been coordinating the area of lifestyle epidemiology. Currently holding a Joint appointment at CNIC, José is a co-investigator in two large cohorts aimed at identifying determinants of early subclinical atherosclerosis: The PESA (Early Detection and Progression of Early Subclinical Atherosclerosis) study and the Aragon Workers' Health Study (AWHS). He has a strong background in clinical research and epidemiology methods, including the design, implementation and evaluation of community-based interventions. He is particularly interested in the study of lifestyle determinants of cardiovascular health. He has worked on this topic from different perspectives, starting from basic biomedical research to currently working at applying epidemiological methods and advanced biostatistics to large datasets.